



newsletter

Vol: 44 No. 12

SHELLEY PUBLIC SCHOOL

16th May 2025



Principal's Report



Dear parents and carers,

It is fabulous to be back at school for Term 3! This is our first newsletter for the term but we have already had so many activities taking place.

Last week, we had a very successful **Mother's Day stall**.

Our thanks to the amazing team of P&C members and helpers who brought together a lovely stall, with a huge variety of gifts for our students to choose from. We hope all of the Shelley mums, grandmothers and other special women in our students' lives had a wonderful day on Sunday for Mother's Day!

Following feedback from the community, we were also delighted to be able to host our first **P&C Mother's Day Dinner** on Friday evening - with 89 guests served! We sincerely thank Keri Farkas and her fabulous P&C team, as well as the Shelley staff who assisted on the day. A delicious range of options were served including roast lamb, roast chicken and vegetables. It was wonderful to celebrate Mother's Day dinner with our community and we hope all the Mums and Grandmas had a lovely time.

Last term we had many of our very talented student artists participating in Operation Art workshops over our two enrichment days. The students produced some amazing artwork – and we will be selecting our Shelley PS Operation Art entrants from their creations.

The next week will be busy at Shelley, with:

- Monday 19th May – **School Photo Day** (Please make sure your child is wearing full school uniform, with black school shoes. Ribbons / scrunchies etc should be green or white if worn. (A reminder: NO tracksuit pants, NO dance pants, NO long-sleeved shirts under school shirts and No joggers!))
- Tuesday 20th May – **Parent Teacher Interviews Years K-2 and Support Classes**
- Tuesday 20th May – Blacktown Zone Cross Country Carnival
- Wednesday 21st May – **Parent Teacher Interviews Years 3-6 (except 5L)**

REMEMBER: the FINAL day for booking your Parent Teacher Interviews via School Bytes is Monday 19th May (this includes 5L interviews).

Our Gymnastics program will commence in Term 3.

Please make sure your School Resource Pack is paid - as this includes the cost of the gymnastics program.

Kiss and Drop Reminder

Students using Kiss and Drop should use the kerb side door of the vehicle. Where this is not possible, for example due to baby seats, an adult must escort the child around the vehicle - NO student is to walk on the road unaccompanied.

Shelley PS Behaviour Policy

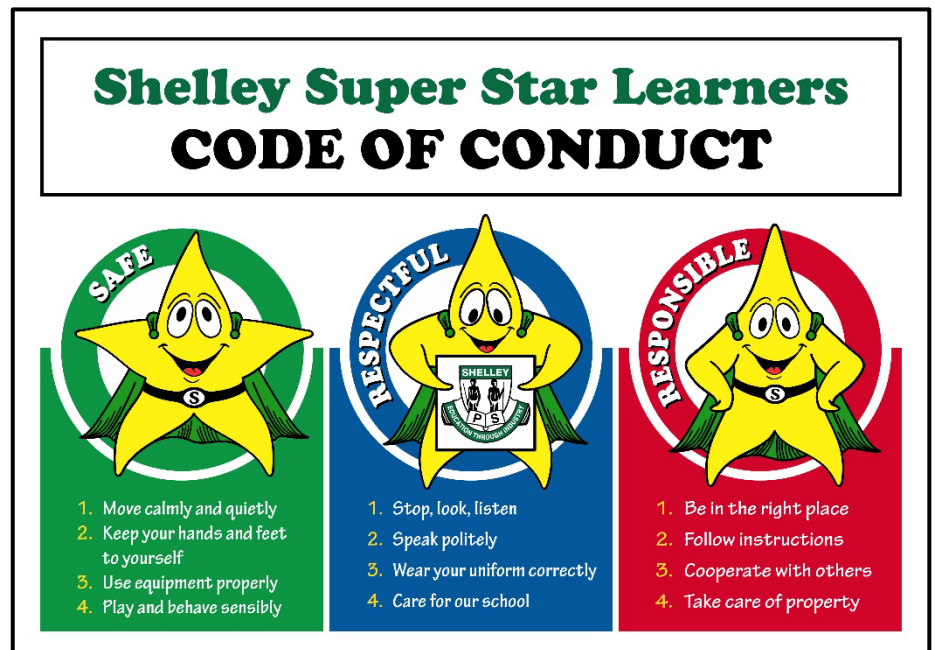
Shelley Public School is a PBL school.

PBL is a school wide Positive Behaviour for Learning System designed to optimise learning by improving and sustaining a positive school culture and enhancing the quality teaching environment.

Statement of Purpose

We at Shelley Public School aim to improve learning and behaviour outcomes for all students. We will do this by encouraging all students to be safe, respectful and responsible learners.

I have included a copy of Shelley's updated All Settings Behaviour Flowchart, outlining the consequences for unacceptable behaviour. Please note in 2024 there was a change to Reset x3. Where a student has received three resets in a term, the exclusion period is 10 weeks (one term commencing from the date of the third reset).



Important Reminder for Parents

Whilst our Student Wellbeing and PBL system is implemented consistently across the school, and our staff place great emphasis on ensuring a positive culture within both classrooms and the playground, from time to time we have incidents of children being unkind, unfair or negative in their interactions with others. Whilst it can be upsetting when your child comes home distressed by something that has happened with a peer, we remind all parents that it is ESSENTIAL that school processes are followed in relation to incidents at school.

Whilst it is important for us all to support children to become resilient (particularly for minor incidents between students), if your child is upset about something, and they have not informed a teacher so that it could be dealt with, we ask parents to please make contact with the class teacher or the Assistant Principal for the relevant stage (see below).

Under NO CIRCUMSTANCES should a parent or family member approach someone else's child to talk about what has happened. Likewise, we ask that parents DO NOT contact the parents of the other child directly where the matter has occurred at school.

The first person to speak to should always be the class teacher, as they will often have the most knowledge about your child. Alternatively, you can contact the Assistant Principal:

- **Support Unit** – Mrs Hall
- **Kindergarten** – Ms Smith
- **Years 1 and 2** – Miss Sultana
- **Years 3 and 4** – Mrs Pikse (Rel. Monday – Thursday)
or Miss Vannitamby (Rel. – Friday)
- **Years 5 and 6** – Miss Liyanage



Attendance

I would like to thank all our parents and students for working so hard to improve our attendance rates over the last 12 months. I am pleased to say that following a period of reduced attendance, overall, Shelley PS students are now attending school more - and very importantly, justified absences are being explained.



Although it is difficult to maintain perfect attendance with the number of colds, flus and other “bugs”, I encourage our families to continue to ensure that students are at school and in attendance, whenever they are well enough to do so to provide consistency in your children’s education.

Regular and punctual attendance at school is essential for the success of students at both primary school and later in life. This is important for not only each individual child, but also for the learning of their whole class.

If your child is absent from school, we ask all parents to ensure a notification is made promptly by responding to the text you receive **ON THE DAY**. (Alternatively you can provide a note to the school upon return, or make a phone call to the office on the day of the absence).

Lost Uniforms

The lost property bins (located just outside the library) are currently overflowing again. Unfortunately many of the items that make their way to lost property are either unclearly labelled (the writing is faded or illegible) or not labelled at all. Where possible, labelled items are returned directly to students.

Once again, we have noticed that some items are turning up a few weeks after they are going missing – possibly having been taken home by the wrong student and then returned a while later. We remind all parents:

- Please **CLEARLY** label ALL items (check the labels periodically to make sure they have not faded or come off)
- Please check your child’s uniforms as they go through the wash each week. (Children frequently pick up the wrong jumper - if you notice your child has brought the wrong items home, please return them to school immediately).

Kiss and Drop Reminders:

Thank you for your assistance and safe use of the Kiss and Drop area. It makes arrival and departure from school much easier for many of our families. Just a few reminders –

- **5km Speed limit at all times**
- **LEFT TURN ONLY** when leaving the Kiss and Drop area.
- If you arrive at Kiss and Drop after the bell- students **MUST** still go to the office for a late note.
- The pedestrian gate at Kiss and Drop is locked at 9am. The pedestrian gate closest to the office will need to be used by students arriving late and parents needing to leave the school grounds.
- **PLEASE display your NAME CARD at pick up EVERYDAY.** The angle cars drive in at – means that we often can’t actually see the driver, to work out who the parent is. However, more importantly, there will be times when I am not at Kiss and Drop- and other staff members will need to know who is picking up who. If all cars consistently display their name on the dash in a clearly visible location- it means the Kiss and Drop can flow much more smoothly and quickly.
- If you need a new name sign- please contact the office. If you make your own temporary sign- please make sure you use a thick marker- not a pen to write the name.



After School Pick Up

We encourage our older students to be responsible to enter and leave school each day. Unfortunately, there are occasionally incidents where children have not been in the correct place to meet their parents or carers. This can be very distressing for parents and teachers alike.

We ask parents to talk to their children about this and ensure that they are aware of the correct procedures if you are running late.

When you are not here to pick them up students must come to the office. (Parents will need to sign students out when they are collected). Of course, if you are aware that you will be running late, it is helpful if you can ring the office to inform us, so students can be notified to come to the office and wait.

Please note: it should not be assumed that it is ok to be late and that staff are on duty to care for students! Where parents are frequently late picking their children up, you will be contacted regarding making alternative arrangements for the prompt collection of your children.



After School Play

Unless they are attending SOSH, or other after-school activities, our students are reminded that after school they should leave the school grounds straight after the bell to make their way home. There is no playground supervision provided after school - and students must not remain on school grounds to play.

If parents are on school grounds with their children after the bell, we ask that you closely supervise your children - and ensure they are adhering to behaviour expectations, as they would throughout the day.

Student Safety, Parking Issues and Courtesy to Neighbours

The issue of road safety around our school has been raised on numerous occasions in the newsletter. Unfortunately, most of the issues with safety at drop-off and pick-up, continue to be with parents from our school parking inappropriately and often unsafely. Although we understand that these times can be very congested with traffic - surely the safety of our students is worth parents parking just a little further away and walking those few extra metres?

We often hear on the news of terrible accidents with young people being seriously injured in traffic incidents. I continue to receive occasional reports about Shelley students being in unsafe situations. One example is students alighting from cars from the driver / traffic side of vehicles. For their safety, students should always get out of a car from the kerb side.

I ask all parents to please take some time to discuss road safety with your children –particularly if they are walking to and from school unsupervised. A reminder - all young children should cross the road with a responsible adult. Where possible - ALWAYS use the available crossings and pedestrian lights.

Easter Raffle Winners



Excursions

“School Excursions and incursions are a valuable teaching and learning vehicle, often integral to quality curriculum delivery in that they provide access to teaching content and learning experiences not available at the school” (DoE Excursion Policy).

Our school, and the Department of Education, is committed to “providing a safe, secure, disciplined and quality learning environment in which students can develop their individual talents, interests and abilities through a curriculum that fosters the intellectual, physical, social and moral development of the student”.

Excursions are part of these quality teaching and learning programs. In choosing to offer an excursion, our teachers always consider the educational value of the excursion, whilst taking into the needs and resources of the school and students, and the total learning program.

We see these excursions as an outstanding opportunity to enhance and extend classroom learning. They are also a valuable opportunity to develop each student’s independence and resilience - and quite often, these experiences are the highlight of the student’s year!

We understand that some parents may sometimes feel nervous or worried about their child leaving the school for the purpose of an excursion, particularly our younger students. Please be assured that our teachers are meticulous in their organisation of events outside the school. We have the same duty of care for students as in the school environment. This duty of care is NOT delegated from the school to parent helpers, caregivers, volunteers or employees of external organisations. Our teachers remain responsible for students and take this responsibility very seriously. A thorough risk assessment is conducted and a risk management plan developed for all excursions. We have the same expectations for student behaviour when we leave the school - and all students must behave appropriately at all times while on excursions.

Please be assured - that your children are precious to us too! If they are attending an excursion with our staff, you can be sure it has been well planned, with consideration for ensuring safety and quality learning for all students. If you have any concerns, please speak to your child’s teacher or the Assistant Principal for the stage, who will be responsible for overseeing the organisation of the excursion.



You can help us to continue to provide these quality learning experiences by sending in notes and paying as soon as you are able – and BEFORE the final cut-off date. (Please remember that we are unable to accept payments made after the cut-off date). If any family is unable to pay for financial reasons, please speak to either Mrs Brechin in the office or myself.

Parenting Ideas: Promoting Resilience

This week I have included an article titled “Make the most of teachable moments to promote resilience”. (It is one I have printed in the past - but I think it offers some great suggestions).

Resilience is often defined as “the ability to succeed and prosper even after facing setbacks and hardships”. One article I found states that “Resilience is especially important during the tween years when children face new academic challenges, pressure and rejection from peers, and increasing awareness of their own limitations. Children who have this ability, bounce back well after they face these issues. They are less likely to develop depression, anxiety or unhealthy coping mechanisms like aggression, eating issues and substance problems. Some characteristics that encourage resilience are innate; such as intellectual ability and being outgoing; but many others can be actively developed.”

The article I have attached explains that how children cope with certain situations in their life will be determined by their resilience and the mindsets of the significant adults around them. I hope you find this article of interest.

Jo-Ann Campion

SRC News

Hello Shelley,

The SRC have been working hard to implement some playground activities across the school to promote engagement, sportsmanship and fun. We will continue to fundraise for Stewart House as this organisation has been a valued part of Shelley's history.

In the past, the SRC have also collected items to support various community organisations. This year, we would like to support Wash House Org. Wash House Org is a community based resource centre that has been a part of the Blacktown LGA for 35 years. Their goal is to support women facing financial difficulty, social disadvantage and violence. Shelley would like to support this cause by collecting new toiletries that can be delivered to shelters to support women who are in need.

Items include: shampoo, conditioner, body wash, deodorant, toothbrushes, toothpaste, hairbands, hairbrushes, dental floss, toiletry bags and handbags. (No razors.)

Collection of items will begin in week 5. Please leave donations in the basket located in the office foyer.

SRC 2025



National Young Leaders Day

Hello Shelley,

On Tuesday 25th of March, the Halogen National Young Leaders Day 2025 at the ICC in Sydney was attended by us- your school councillors.

During the day we listened to a number of high-profile Australians talk about their journey as a leader. The speakers were Bondi Rescue lifeguard, Anthony 'Harries' Carol, multi-award-winning screenwriter and author, Thomas Duncan-Watt, Olympic swimmer and gold medallist, Emma McKeon, and upcoming star of the Moana live-action film, Catherine Laga'aia.

We learnt about how to build resilience in the toughest of times and that stress is normal- use it to your advantage. We were encouraged to attempt things even when we're afraid and always be up for trying new experiences. The speakers taught us that sometimes motivation isn't enough and discipline is important. The mantra we took away from the day was: "Every master started as a disaster!"

Overall, we think the best part of the event was being able to hear stories from a lot of different role models and the journeys they have taken.

The kind of leaders that we want to be for our school are leaders who are supportive, caring, empathetic and helpful. Most of all, we would like to be leaders who give others a voice!

Jada, Inba, Omar, Viaan, Elya, Abisha, Ameliah and Hinna

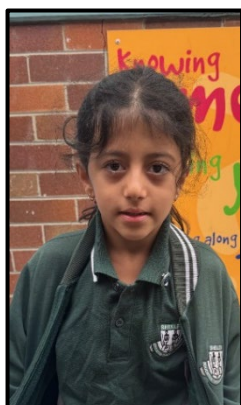




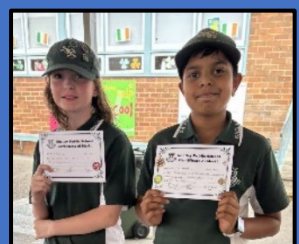
**Pinnacle our Highest Award
Congratulations Shania 6F**



**Congratulations to our Shelley Super Stars: Isaac 3V, Kyle 1G, Jameel 2S,
Alicia 2J, Nikita 1D, Nekhat 4T, Yasemin 2J, Sebastian 4D, Isabel 4D,
Chloe 4D, Lulu 2/3T, Eden 4D, Payton 2S, Caitlyn 4D and Archer 5S.**



White Awards



Tech Monitors



Super Swimmers!





Shelley Super Stars

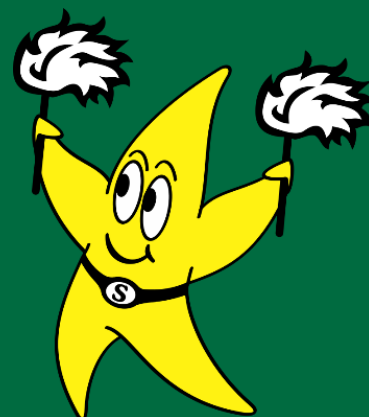
Congratulations to the following students on achieving their:

 ▶ Anna 3V

 ▶ Reyansh 2/3T

 ▶ Aagna 1G
Harley 1G
Spencer 1G
Adhyuth 2J

These students will be presented with their badges at the K-6 Assembly.



Enrol now for Kindergarten in 2026

Enrol now on our school website:

shelley-p.schools.nsw.gov.au

click on Enrolment at the top of the home page

Let your friends and neighbours know!

Dates to Remember

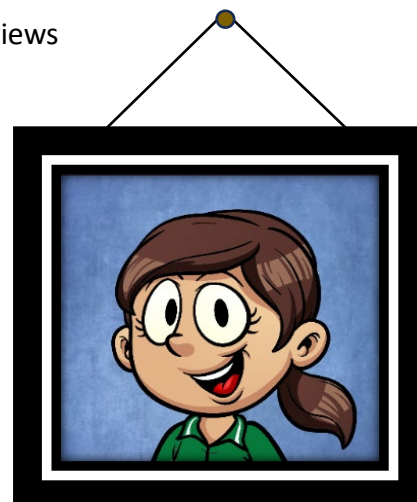


Week 4

Monday	19th May	School Photographs
Tuesday	20th May	K-2 and Support Class Parent Interviews
Wednesday	21st May	3-6 Parent Interviews (except 5L)
Friday	23rd May	PSSA

Week 5

Monday	26th May	Primary girls zone football trial
Tuesday	27th May	Primary boys zone football trial BFoPA online rehearsal
Wednesday	28th May	Last day of Book Fair
Thursday	29th May	SRC CRAZY MUFTI DAY
Friday	30th May	PSSA



Notes and Money to be Returned by Due Date

Year	Event	Due Date
K-6	School Photos	19th May (on the day only)
Year 3	Incursion - \$22	16th June
Year 5	Camp Instalment - \$100	6th June
Year 6	Camp Instalment - \$100	30th May

**NO LATE
Payments can
be Accepted**

All notes are emailed to parents/carers and published on the Audiri app.

CRAZY EVERYTHING MUFTI DAY



Supporting
Stewart
House

Thursday 29th May

Crazy Hair! Crazy Clothes! Sensible Shoes.

INSIGHTS

by Michael Grose – No. 1 parenting educator



Make the most of teachable moments to promote resilience

How they cope will be determined by their resilience and the mindsets of the significant adults around them.



Kids live in the NOW. Fun comes before work in their dictionaries.

It's easy for parents to get tied up in the NOW particularly when kids experience hardships, frustrations and difficulties. We just want to take away their pain!

When we focus solely on making the situation better we miss some massive opportunities to help kids learn and grow.

The big learning opportunities are usually hidden as problems. Most commonly they are: change, loss, rejection, failure, disappointment and conflict.

Perhaps your child has experienced one of these common challenges:

- ▶ Been snubbed by a classmate or friend
- ▶ Missed being picked for a team even though they tried hard
- ▶ Worried about going to school camp
- ▶ Had something stolen from them
- ▶ Been taught by a teacher they don't get on with

I am not suggesting we want bad things to happen but developmentally life throws up these types of curve balls all the time for kids.

How they cope will be determined by their resilience and the mindsets of the significant adults around them.

When parents and teachers have mindsets for resilience then they see these situations as TEACHABLE MOMENTS.

A teachable moment is usually disguised as a problem and is easily missed when we focus on the now.

When faced with a TEACHABLE moment ask yourself:

- ✓ **How can I teach my child to cope?**
e.g. Encouraging kids to talk about problems is a great coping skill.
- ✓ **What can my child learn about himself for next time?**
e.g. A child may learn when he goes on a school camp that he was dreading that he can spend time away from home and still survive.
- ✓ **What can my child learn to avoid or turn this situation around?**
e.g. A child may learn that he can reduce conflict with less than pleasant peers by ignoring nasty comments and actively spending more time with friendly kids.

Parenting has always required an exceptionally strong set of skills, including carer, nurturer, leader and negotiator. That's why it is such a hard job.

BUT the longer I am involved in parenting the more

I am convinced that Parenting is fundamentally about TEACHING.

The ability to pass on skills, knowledge and attitudes is the most important skill of all.

We teach by modelling but we also teach kids explicitly. That means we talk to kids about 'stuff' and help them to work out how they may cope or manage different situations they meet.

First we need to be on the look out for TEACHABLE MOMENTS. Then make the most of these opportunities so that kids can grow and learn from some of the challenges they face.

Mastering these teachable moments is how parents help their kids become resilient and bounce back from some of the setbacks they encounter now and, importantly, in the future.

parentingideas.com.au parentingideas.co.uk parentingideas.co.nz

Michael Grose Presentations

PO Box 167 Balnarring Vic 3926 p 61 3 5983 1798 f (03) 5983 1722 e office@parentingideas.com.au

All rights reserved. For more ideas, support and advice for all your parenting challenges please visit our website.

© 2013 Michael Grose

facebook.com/Parentingideas.com.au

twitter.com/michaelgrose



Do you have a pensioner concession card? You could be eligible for Saver Plus.

For every dollar you save, you'll get a dollar from ANZ to spend on educational costs, up to \$500.

To join, you need to meet all of these requirements:

- ✓ Be 18 years or older
- ✓ Have a current Health Care or Pensioner Concession Card
- ✓ Have a child in school, starting school next year, or be studying yourself
- ✓ Get a regular income (can be you or your partner)
- ✓ Agree to join in free online financial education workshops



1300 610 355

saverplus.org.au





Become a foster carer today

**Open your heart
and home to
a child in need**

We urgently need
more foster carers in
NSW, and you could be
who we're looking for!



Interested?
Snap the code
to learn more

- **Make a difference**
Give stability and support to a child or young person.
- **Be rewarded**
Transform lives, including your own.
- **Be part of the community**
Join a network making an impact in young lives.

wesley mission 