



# newsletter

VOL: 38 No.3

SHELLEY PUBLIC SCHOOL

15th February 2018

Deputy Principal's Report

Shelley Super Stars

Shelley Staff

Dates to Remember



## Principal's Report



## KidsMatter

It is hard to believe we are at the end of Week 3 already! Our sincere thanks to the parents for your role in ensuring the start of the school year has been a positive one for our students. We look forward to a fabulous year of learning at Shelley – a year which will include collaboration, co-operation, friendship and fun.

In my role as Principal, I continue to be impressed by the calibre of the staff here at Shelley PS. I am constantly delighted to hear our staff speak so passionately about their job as teachers. When I have conversations with Shelley staff it is abundantly clear that they have a real commitment to their students – and this is reflected in the many wonderful opportunities provided to the students of our school from Kindergarten through to Year 6.

### 2019 Classes

Our students are now settled in their classes for 2019. I have been very pleased by the way the students have settled so quickly into their new class groups and it has been a productive and busy week of learning at Shelley Public School.

A map of classes and classroom teachers was sent home in the Shelley Spotlight last week.

Later in the newsletter, we have also provided a **full list of staff at Shelley**, as well as their photos, including all of our support teaching staff and our SASS (School Administration and Support Staff) team.



### Staff Car Park

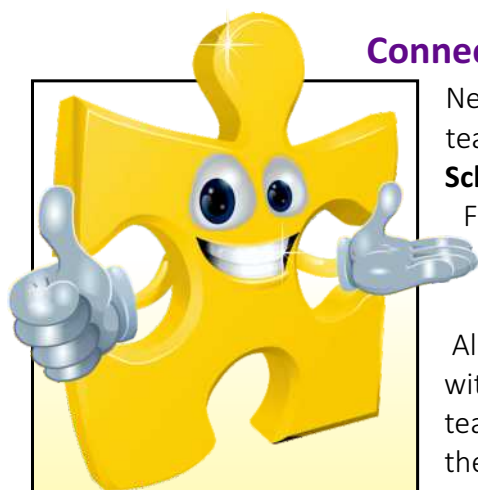
Parents – for the safety of all our students, I remind you that the Hadrian Ave car park is for the use of **staff only**. Please do not attempt to drive into the car park to drop off your child.

**No child or parent should be walking through the middle of the car park.**

If you drop your child at this gate, please remind them that they **MUST** use the footpath provided – not take a short cut through the car park. We have in the past had a small number of adults setting a poor example by walking their child through the car park in the mornings and afternoon. Student safety is of paramount concern to us – and we ask all parents to assist us in this matter.

Please be mindful of these safety concerns – and remember to closely supervise young children, in particular as they enter and leave the school.

**Safety is as simple as ABC - always be careful**



## Come and Meet our Teachers

**WEDNESDAY**  
**20th February**  
**5:00-6:30pm**

### Connecting School and Home (Come and Meet our Teachers)

Next week we will be hosting an opportunity for you to meet the teachers of Shelley PS. Once again this year, **Connecting Home and School** will be a much more informal evening, held on Wednesday 20th February from 5-6.30pm. All Year 1 to 6 teachers will also be available in the hall from 4.30pm, so parents have the opportunity to come and meet them personally if preferred.

All **students and parents** are invited to attend this evening, sometime within the two hours timeframe, to have an informal chat with the teachers and support staff and share a sausage sizzle BBQ to celebrate the start of the 2019 school year.

Information about each grade will be available for collection on the evening (and distributed during the week to those parents unable to attend).

You will receive a hard copy of grade information sheets, including important information about class routines and activities planned for your child's class / grade during the year.

The Sausage Sizzle will be provided by the school as a welcome to the school community.

The P&C will be here to meet with you and provide information about their role here at Shelley PS. They will also be running some fundraising

games and activities. The canteen will be open for the purchase of drinks and snacks.

We hope to see most of the Shelley community here on the evening, as we recognise the importance of a positive partnership between home and school, which is paramount in gaining maximum educational progress for your children.

### Kindergarten Information Session – Wednesday 20th February 4-5pm

Prior to our Connecting School and Home evening, we will still be holding a traditional Meet the Teacher session for our Kindergarten parents. This meeting will take place from 4-5pm in the KA classroom.

### Breakfast Club

Breakfast Club is held each morning at Shelley – and, if you have missed breakfast at home, it is a great opportunity for students to come along for a bite to eat and a drink before heading into class for the day.

#### Breakfast Club commences at 8.30am.

(Just a friendly reminder: Students should NOT arrive at school prior to 8.30am – as there is no teacher supervision until the 8.30am bell).

### School Requirement Pack

Each year, families receive a note outlining the cost for subscriptions, texts and other books required for each class for the year ahead. In recent years the number of text books used by students has been significantly reduced, in favour of alternative resources. The total costs vary depending on the grade – but are only slightly higher than the amounts paid in 2018 (The payment for Footsteps Dance has been included in the pack this year).

This form also outlines the procedure for the collection of the Voluntary Family Contribution. The School Requirement Pack forms for 2019 were sent home in Week 2.

If you have misplaced the note, or did not receive one, copies are also available on our website.

We ask for your support in getting these packs paid for as soon as possible – to allow students to have access to the necessary equipment.

## School Excursions and Incursions

Throughout the school year, the teachers plan a variety of additional activities to support our students' learning and to provide them with a wide range of educational opportunities and experiences. These out of school excursions and at school incursions (i.e. special visits to the school, such as Life Education or author visits) are always closely linked to the teaching program and to the curriculum.

Wherever possible, the students attend the excursions / incursions in the term in which they are studying a particular unit of work. With some of these events, we are restricted as to when they can occur, based on availability.

If you are unsure about the dates for any upcoming events for your child, please refer to the school website, where the calendar contains all upcoming excursions and incursions. If you have misplaced a permission note, copies can also be obtained from the website.

## Parent Online Payments

The introduction of Parent Online Payments (POP) a few years ago was very successful, with most parents now taking advantage of this convenient payment method. For those who have not yet had the opportunity to use POP (and for our new Kindergarten parents), I have provided some important information and reminders below.

Parent Online Payments (POP) allows parents to make payments to the school for amounts owing, via a secure payment page. Payments can be made using a credit card – Visa or MasterCard or a debit card. Payments are made via a secure payment page hosted by Westpac. The payment page is accessed from the front page of the schools website by selecting **Parent Payments Online**. The link is on the front page of the school website. Look down the right hand side and it is the last link.

Items that can be paid include voluntary school contributions, subject contributions, excursions, sales to students, sport and creative and practical arts activities (these include choir, drama and dance).

There is also a category called 'Other'. This to cover items not covered in the previous headings. 'Other' can also be used to make a complete payment of a school invoice.

When you access the Parent Payments Online you must enter:

- the student's name AND class **OR** the student's name AND date of birth.

These details are entered each time you make a payment as student information is not held within the payment system.

This is a secure payment system hosted by Westpac to ensure that your credit / debit card details are captured in a secure manner; these details are not passed back to the school.

You have the ability to check and change any details of the payment before the payment is processed. Receipts can be emailed and / or printed.

Details of the payments are passed daily to the school where they will be receipted against your child's account. As a receipt has been issued from the payment page a further receipt will not be issued by the school.

Parents using the online payment system must ensure they record the receipt number on the permission slip before returning it to school. Please note, permission notes will still be required for all activities.

Please remember – if you are making an online payment – it is essential that a permission note is ALSO returned to school the following day. Please ensure your RECEIPT number for the online payment is included on the note.

REMEMBER: for incursions and excursions – **students are unable to attend without a permission note** (even if a payment has been made online). If you have any questions about online payments – please contact the office and one of our helpful administration staff will try to assist.

### Please note:

A separate online payment must be made for each child.

Online Payments **CANNOT** be made for: PSSA, Raffle Tickets or for Uniform Payments.

## NO LATE PAYMENTS

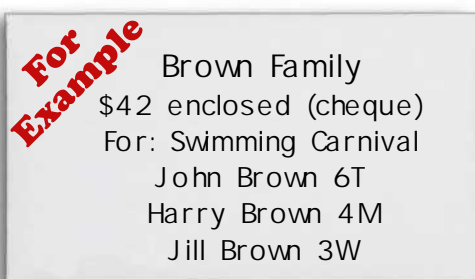
Another important reminder for all events and activities – permission notes and money must be returned by the due date. We are UNABLE TO ACCEPT late payments.

## Cash / Cheque Payment for Excursions and Incursions

For parents new to our school, I have also provided some information about our other systems for cash and cheque payments for activities.

Notes will be sent home for excursions and activities. **Permission slips and payment must be sent in by the date nominated on each note.** Students who have not returned permission slips and money will be unable to participate.

A reminder – when paying for siblings to attend an event, payment CAN be made in one envelope. However – each child MUST have their OWN permission note signed. (If payment has been sent with a sibling – please write this on the permission slip).



When paying for a number of activities – OR for a number of children to attend – please clearly indicate on the envelope

- WHAT the payment is for (excursion / or events) AND
- WHO the payment is for (all children's names and classes)

All money should be brought directly to the office and placed in the “posthole” at the office counter. Receipts will be returned to the students by their class teacher.

**Please Note:** Where there is a difficulty for parents in paying for any excursion or event, please contact Ms Campion or Mrs Williams via the office. We want to ensure that all students have the opportunity to participate and do not want any child to miss out on participating in any activity as a result of financial hardship.

## Shelley Newsletter - Only available via email or website!

We are committed to the parent / school partnership at Shelley. We encourage you to be involved in many aspects of school life. We also strive to keep you well informed and therefore send a fortnightly newsletter home to each family. A reminder that Newsletters and Shelley Spotlights are now sent home **via email** every Friday. We will also send urgent notices and reminders via the Shelley Public School APP.

If you have not provided the school with your current email address, please contact the office to update your details as soon as possible. (Please be assured the newsletter is emailed as a BCC and your email address will not be shared with anyone else).

**Remember – the newsletter can also be found on the school website, at:**

<https://shelley-p.schools.nsw.gov.au/>

The newsletter link is also sent via the school app.

## Photographs of Students at School

This message is repeated from the last newsletter, as it is important that all parents are aware:

On many occasions at school, photographs are taken by teachers of individual students, groups or whole classes. These photos are sometimes displayed in classrooms, published in newsletters, on the website, on our official social media pages and used for instructional or promotional purposes. Children are generally not identified by name (and if so – only by their first name). During the year we may also have professional photographers at school to take photos for school banners and other promotions. We will also be taking photographs of some of our new Kindergarten students, in preparation for the Kinder welcome packages for 2020.

If you **DO NOT wish for your child to be photographed** when at school, or for their photos to be used, **please ensure the school has been notified in writing by Monday 18th February.**

## Pick Up and Drop off – Please be mindful of our neighbours!



As we commence a new school year, I would just like to ask all students and parents to be mindful of our neighbours when you arrive at and leave school. Our neighbours are very supportive of the school, and rarely ring us to complain. However, it is important that we as a school community show respect to our neighbours and their property.

Please do not park in or block the driveways of residents living in the vicinity of our school. Likewise, please do not allow your children to go onto or damage our neighbours' properties – particularly gardens etc. We appreciate your assistance in this to ensure that we can continue to have positive and supportive engagement with residents who live near our school.

## P&C March Meeting and AGM

Our first P&C meeting for 2019 was held last week. There was a good turnout of parents, and we even had one or two new faces, which was fabulous to see!

I encourage all parents to consider becoming a part of the P&C. The next P&C meeting will be held on Monday 4th March. This is the Annual General Meeting, as well as the March meeting. During the AGM, a new Executive Committee will be elected.

Shelley's P&C has a proud tradition of supporting the school and our students through their fundraising and the provision of facilities such as the Canteen and the Uniform Shop.

## Lost Property Reminder

We frequently remind students about the importance of labelling all items of clothing and checking lost property for missing items. (The Lost Property cupboard is located near the hall). Occasionally I hear of jumpers that have gone missing for weeks at a time – only to turn up later and be returned to the owner because it is clearly labelled. It is common for students to inadvertently pick up items of clothing, particularly hats, jumpers and jackets, which do not belong to them. It is helpful if parents can check their children's school uniforms as they are going through the wash. If you notice an item that does not belong to your child, please return it to the school as soon as possible – as its prompt return may save another parent the expense of replacing the missing item unnecessarily.

## House Groups

For new families to our school there is a lot of “new information” to learn about school life, and particularly school life at Shelley. I am frequently asked by new parents about our House Groups. I have therefore included below some information for our Kindergarten parents – and other families new to the school.

Each student at Shelley is placed in a house group when they arrive.

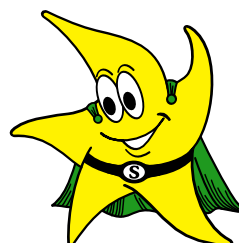
The house groups are:

|                |                 |               |              |
|----------------|-----------------|---------------|--------------|
| <b>Mawarra</b> | <b>Karingal</b> | <b>Nallak</b> | <b>Orana</b> |
|----------------|-----------------|---------------|--------------|

Students are placed randomly into a house group – but in such a way to ensure that we have an even distribution of boys and girls in each age level in each house group. Siblings, however, are always placed in the same house group.

All of our major sporting activities, such as the swimming carnival, cross country and athletics carnival revolve around these houses, with students representing their House team to earn points. The winning house for each carnival is presented with a trophy.

Parents – if there is an aspect of school life that leaves you puzzled – or you would like explained, please let me know. If you are asking the question – chances are someone else is too!





## Safety Reminder

I would like to remind all parents and students that bicycles and scooters must not be ridden on the school grounds. Students riding to school must walk their bike / scooter once inside the school gate. (All students riding MUST also be wearing a helmet). Electric Scooters should not be brought onto the school grounds. Students are also not permitted to ride skateboards to school.

Only students in Years 4, 5 and 6 are allowed to ride their bike to school by themselves. Any child younger than Year 4 MUST be accompanied by a responsible adult.

These measures are for the safety of our students and I thank parents in anticipation of your support.

## Internet Safety and Appropriate Online Behaviour

Concerns regarding student safety online are constantly in the news headlines. It is important for us as educators and parents to be mindful of children's internet use.

As we begin the new school year, I thought it might be timely to include some reminders about safe internet usage in this newsletter. Please take some time to read through this information, and discuss with your children, as you feel necessary.

Of particular concern to many parents is the kind of things that some young people occasionally say to each other via the internet – whether through email, skype, facebook (although our students should not have access to facebook, being under 13 years of age) or other social media sites.

When talking to students about internet safety and appropriate online behaviour – my bottom line is always that they should NEVER post or message anything online they wouldn't want their parents or their teacher, for example, to read. It could be there forever!

One great source of information for parents is ThinkUKnow Australia, which is a partnership between the Australian Federal Police and Microsoft Australia. It aims to raise awareness amongst parents, carers and teachers of how young people are using technology and how to keep them safe whilst doing so.

ThinkUKNow has three main themes: Have Fun, Stay in Control and Report.

They have a very useful website at <http://www.thinkuknow.org.au/>



The website includes lots of resources, including fact sheets, an e-newsletter and practical tips for protecting your family online. It is well worth a look!

Other useful websites include:

<https://esafety.gov.au/>

[www.stopcyberbullying.org](http://www.stopcyberbullying.org)

[www.teenangels.org](http://www.teenangels.org)



## Morning Routines

Thank you to all our Kindergarten parents who have been encouraging their children's independence in the morning by bringing them and allowing them to meet their new friends in the playground. It really is a delight to see how well our newest students have settled into school life!

Just a reminder – the first bell of the day rings at 8.30am.

Students should NOT arrive prior to this bell as there is NO TEACHER SUPERVISION in the playground prior to 8.30. This is for the safety of our students and I ask all parents to be mindful of what time they drop their children off.

## Core Rules for NSW Public Schools

Now that we have been back at school for a few weeks, it is timely to review the Department of Education's set of "Core Rules" encompassing student discipline in all NSW government schools.

As always when I reflect on these core rules, I feel very proud of the way our students meet these expectations each and every day. The students of Shelley (and their parents) should be proud of the responsible, respectful and caring learners they are becoming.

For those of you who are not familiar with the core rules – I have provided a copy below.

*All students are expected to;*

- *Attend every school day, unless they are legally excused, and be in class on time and prepared to learn.*
- *Maintain a neat appearance, including adhering to the requirements of the school's uniform policy.*
- *Behave safely, considerately and responsibly, including when travelling to and from school.*
- *Show respect at all times for teachers, other school staff and helpers, including following class rules, speaking courteously and cooperating with instructions and learning activities.*
- *Care for property belonging to themselves, the school and others.*
- *Treat one another with dignity and respect.*

The overwhelming majority of our students successfully follow these "core rules" at all times. Occasionally, it is necessary for teachers to remind students about appropriate and acceptable behaviour, appearance or attendance. We appreciate the support of parents when this is necessary – as already mentioned it is a strong home-school partnership that helps our students grow to be the best they can be.

## Head Lice Reminder

The presence of Head Lice (Nits) is an ongoing problem in schools. We need the support of parents to help minimise their spread, by detecting and treating head lice.

It is essential that parents check students' hair regularly. If you see any evidence of lice or eggs you will need to treat your child, and the whole family before your child returns to school. If unsure, your local chemist would be able to advise you on the appropriate treatment for head lice. Left untreated head lice will quickly spread through a class and students often become re-infested.

Please remember- this is not something to be embarrassed about – as head lice like to "set up camp" in clean hair, not dirty hair!

## Social Media: Instagram and Facebook

**The OFFICIAL  
Shelley PS  
social media accounts  
can be found  
by searching for:**



**Facebook:  
Shelley PS**



**Instagram:  
shelley.ps**

Many parents have now accessed our new social media pages.

In order to help our parents stay in touch with what is happening at Shelley, last year we introduced social media. We have established a Facebook page, as well an Instagram account, which are used to acknowledge the amazing work done by students and teachers of Shelley and to showcase the many events and activities that take place here every week. (Please note: the social media accounts are a secondary form of communication – and should not be relied upon for reminders about upcoming events etc. We encourage all families to access the newsletter and app as the core communication tools).

Of course, both social media platforms will be closely monitored and managed. The Facebook page is for use by parents (none of our students should have Facebook accounts anyhow, as they are under 13 years of age).

We hope parents will find these platforms to be a helpful and enjoyable way to stay in touch with what is happening in their children's school.

## Road Safety Reminders - Don't risk injuring a child

Please be aware of no stopping / standing areas and bus zones, as well as parking restrictions in streets around the school. I include the following safety reminders:

The 40km/h speed limit in school zones operates between 8:00-9:30am and 2:30-4:00pm on school days - be aware of the time or you could get fined.

Children can be unpredictable and hard to see. It's important that parents and carers observe local school safety initiatives when dropping off and collecting children.

### Penalties are high, new fines and demerit point increases include:

- Speeding - minimum fine of \$128 and four demerit points
- Approach children's crossing too quickly to stop safely - \$384 fine and four demerit points
- Double parking - \$231 fine and two demerit points
- Stopping on or near a children's crossing - \$308 and two demerit points
- Illegal use of mobile phone in school zone - \$308 fine and four demerit points.

The worst penalty, however, is knowing you've caused an injury to a child!

Please also be considerate of our neighbours when parking in the streets around the school. In the past, there have been a few incidents where residents have been unable to drive out of their driveways because it has been obstructed by a vehicle.

*Jo-Ann Campion*

# HARMONY DAY

## Thursday 21st March

**Wear orange mufti clothes  
or national costume**



Celebrate cultural diversity

Parents are welcome to dress up too!





## Deputy Principal's Report

### Come and Meet our Teachers

We are looking forward to meeting our parents next Wednesday evening at our Connecting Home and School function. We have included in this newsletter photos of our staff to assist parents in putting 'a face to the name' and making it easier to locate us on the evening.

### Shelley Super Stars

It is wonderful that we are able to congratulate students on their fantastic achievements with the presentation of Super Star Badges. Remember to keep your child's white certificates in a safe place at home when you receive them! When you have collected 5 white awards, send them in to your child's class teacher. The white awards will be put in the class envelope and sent to me, so I can organise the Super Star badge and put your child's name in the newsletter.

You can hand in your white awards to your child's class teacher at any time, however, remember it takes time to update our database, process the Super Star Badges and put your child's name in the newsletter. White awards must be handed in by Wednesday afternoon – for the Super Star to be presented at the following Monday morning assembly.

If a badge is lost, a replacement can be obtained for \$4.00 from the school office.

Included in this newsletter is a copy of the school merit system.

### Positive Behaviour for Learning

Shelley PS is a PBL school and 2019 will be our 11th year of involvement. PBL is a school wide system designed to optimise learning for students by improving and sustaining a positive school culture and enhancing the quality teaching environment. Each year we spend a great deal of time reviewing current practices and making modifications where required. It is our goal to make our school the best it can possibly be.

The focus of PBL is creating a positive learning environment by explicitly teaching positive behaviour and social skills in all school settings. That is – ensuring that we have the same expectations and rules in all areas of the school – in the classroom, library, playground, at sport, at the canteen, on excursions and at PSSA sport.

I have included in this newsletter the Shelley PS Code of Conduct and the Behaviour Flowchart followed by all teachers in all school settings.

## PBL Update



### Shelley Super Stars are Safe Respectful and Responsible!

Shelley Super Stars play the game by the rules. Our purple award winner at the K-6 Assembly this week was **Manal from 1T**. Congratulations, we hope you enjoyed your special canteen reward!



*The PBL Committee*

## Parent Involvement and Participation

### Parents and Citizens Association (P&C)

This voluntary body works to further the aims of our school. The P&C have an active group of parents and citizens who work towards raising funds and providing services and support to our special programs and the school.

This association meets on the 1st Monday of each month at 7:00pm in Room 2.

They encourage and welcome any parent / caregiver to attend these meetings.

### There are many other ways you can become involved at school including:-

- talking positively about our school.
- encouraging your child to like school.
- talking to your child's teacher about anything that concerns you.
- helping in the classroom.
- helping with sport.
- working in the canteen.
- supporting fundraisers.
- getting to know your child's friends and parents.
- attending special days/ functions and assemblies.
- returning notes promptly.



**Parents/caregivers and teachers need to support each other.**

**With your help and support, our school will be a really happy place for your child.**

## High School Students

Parents, please note that high school students are not permitted inside the school grounds before our school bell unless accompanied by their own parent. On a Monday and Tuesday afternoon when high school students finish early, they must wait outside the school gates until the bell has gone. Then they may enter the grounds to collect their siblings. This is to minimise disruption to our school routines.



**Your child's best learning time is at the beginning of the day...**

**School starts at 8.55 - Don't be LATE!**



| When your child misses just... | that equals...                              | which is...                               | so from Kindy to Year 12, they will miss out on |
|--------------------------------|---|---|---|
| 10 minutes a day               | 50 minutes of learning each week            | Nearly 1½ weeks per year                  | 6 months  |
| 20 minutes a day               | 1 hour and 40 minutes of learning each week | Nearly 2½ weeks per year                  | Nearly a year                                   |
| ½ hour a day                   | ½ a day of learning a week                  | 4 weeks a year                            | Nearly 1 ½ years                                |
| 1 hour each day                | 1 whole day of learning each week           | 8 weeks per year or nearly a term a year. | Over 2 ½ years                                  |



## Shelley Super Stars

**Congratulations to the following students on achieving their:**



|            |    |
|------------|----|
| Hariata    | 3S |
| Aaliyah    | 3S |
| Christofer | 3S |
| Alyssa     | 3T |

These students will be presented with their badges on Monday 18th February at the K-6 Assembly



*Leanita Williams - Deputy Principal*

## Swimming Carnival

Thursday  
21st February

Ripples Leisure Centre  
St Marys



*Just Keep Swimming!*

Students attending must be at school by 8:30am

Congratulations to our  
Shelley Super Star: Nila 4B



## Dates to Remember



### Week 4

Wednesday 20th February **Connecting Home and School Family Evening**  
Kindergarten from 4pm  
Years 1-6 from 4.30pm

Thursday 21st February **Swimming Carnival**

Friday 22nd February Zone Trials

### Week 5

Monday 25th February **3-6 Assembly - 6D and 6E hosting**

Thursday 28th February Scripture Starts

Friday 1st March PSSA Round 1

## Notes and Money to be Returned by Due Date

| Year   | Event                          | Due Date    |
|--------|--------------------------------|-------------|
| K-6    | School Requirement Packs       | asap        |
| K-6    | Afternoon Pick Up Arrangements | asap        |
| K-2    | Got It! - Parent Survey        | 22 February |
| Kindy  | 30 Days of Kindy BBQ           | 8 March     |
| Year 4 | Camp Deposit - \$50 and note   | 15 March    |
| Year 5 | Camp Deposit - \$50 and note   | 15 March    |
| Year 6 | Camp Deposit - \$50 and note   | 15 March    |

**NO LATE  
Payments can  
be Accepted**

**Please note: copies of all notes and Newsletters are available on the Shelley website.**

## Shelley Super Star Learners CODE OF CONDUCT



1. Move calmly and quietly
2. Keep your hands and feet to yourself
3. Use equipment properly
4. Play and behave sensibly



1. Stop, look, listen
2. Speak politely
3. Wear your uniform correctly
4. Care for our school



1. Be in the right place
2. Follow instructions
3. Cooperate with others
4. Take care of property







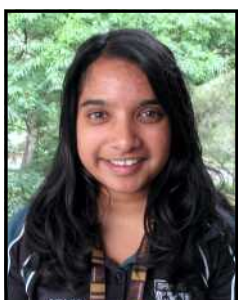
**Ms Jo-Ann Campion**  
Principal

# Shelley Public School Staff 2019



**Mrs Leanita Williams**  
Deputy Principal

## Kindergarten



**Miss Anushka Vannitamby**  
**KA**



**Mrs Simone Hall**  
**KH**



**Miss Sharon Vesty**  
**KV**

## Year 2



**Mrs Jas Jassal**  
**2J**



**Ms Michelle Madden**  
**2M**  
Monday - Thursday



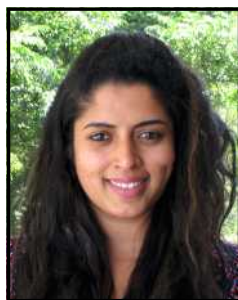
**Mrs Christine Sullivan**  
**2M** Friday

**Mrs Margy Pitt**  
**2P**

## Year 1



**Ms Cathy Dobbie**  
**1D**



**Mrs Michelle Fernando**  
**1F**



**Miss Jackie Storey**  
**1T**  
Monday - Wednesday



**Mrs Rachel Ramnac**  
**1T**  
Assist. Principal **S1**  
Thursday & Friday





## Year 3



Miss Heather Lacey  
**3L**



Mrs Vicki Delander  
**3T** Friday



Miss Amy Sultana  
**3S**  
Assist. Principal (Rel) **S2**



Miss Sarasi Liyanage  
**3T**  
Monday - Thursday

## Year 5



Mrs Sam Gibbeson  
**5G**



Mrs Amy Joyce  
**5J**



Mrs Tamara Pain  
**5T**  
Tuesday - Friday



Mrs Ash Lochan  
**5T**  
Monday

## Year 4



Miss Yassy Boomgaard  
**4B**



Mrs Kelly Lyons  
**4L**



Mrs Courtney Rooney  
**4R**



## Year 6



Mr Jason Duss  
**6D**



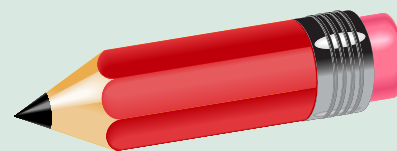
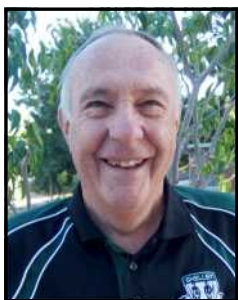
Mrs Nidhi Elvy  
**6E**



Mrs Sharan Foster  
**6F**



Mrs Lisa Ramnac - EALD

Mrs Liz Bradley  
Library  
Assistant Principal  
**Stage 3**Miss Ros Greenwood  
Literacy/Numeracy Mentor  
Assistant Principal  
**ES1**Mr Shawn Parsonage  
Technology MentorMiss Sophie Gill  
Speech PathologistMr Brian McKay  
QTSS

## Support Staff

Mrs Beba Boomgaard  
RFFMs Melissa Vance  
RFFMrs Beth Sobb  
RFFMs Lenore Edwards  
School CounsellorMrs Bianca Pikse Support  
Assistant Principal (Rel) **S1**Mrs Wendy Symington  
SupportMrs Christine Sullivan  
SupportMrs Vicki Delander  
Support



## School Learning Support Officer



Mrs Pauline Legge  
SLSO



Mrs Ingy Shokry  
SLSO



Mrs Naomi King  
SLSO



Mrs Gina Sullo  
SLSO



Mrs Chrissy Papadopolous  
SLSO

## Administration Staff



Mrs Julie Brechin  
Office Manager



Mrs Vicki Jones  
Office Administration



Mrs Rachel Swift  
Office Administration



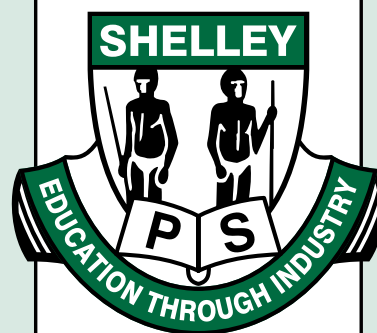
Miss Jo-Anne Brechin  
Office Administration



Mrs Carmel Nguyen  
Office Administration

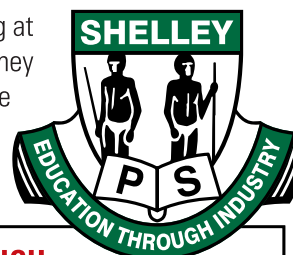


Mr George Ayoub  
General Assistant



# Shelley School Merit System

The Shelley Public School Merit Award System is a cumulative system over the student's schooling at Shelley Public School. It starts when a student enters school at Shelley Public School and ends when they leave the school. The badge level they reach when they leave our school is theirs to keep. The ultimate badge is the Shelley Public School Pinnacle which remains the student's upon achievement.



## STUDENTS NEED TO KEEP THEIR MERIT AWARDS IN A SAFE PLACE

**THE FOLLOWING AWARDS** are given out to acknowledge student accomplishment, participation or achievement. However, these are additional to the Pinnacle Merit Award System and are not included: Participation certificates for Education Week, Music Festival, Easter activities, debating, swim school, external competitions & events, school carnival ribbons, presentation day awards, PSSA grand final certificates, district and state based awards.

### HOW DO WE PROGRESS THROUGH THE SYSTEM?

Teachers give students awards to recognise their achievements and efforts in all aspects of their life at school.

#### 5 x MERIT AWARDS = WHITE AWARD

- Students take their awards to the class teacher.
- Class teacher signs and dates merit awards and completes a white award.
- Merit awards returned to the student.
- Deputy Principal / Principal sign the white award.
- Assistant Principal presents the white award at the K-2 or 3-6 Friday Morning Assembly.

#### 5 x WHITE AWARDS = SUPER STAR BADGE

- Students give their 5 white awards to the class teacher.
- White awards are signed, dated and marked with badge number by the Deputy Principal and then returned to the student.
- Student's name published in newsletter.
- Deputy Principal presents the appropriate level badge at the K-6 Monday Morning Assembly following publication in newsletter.
- Super Star Badge recipients have their photo taken and attend a special morning tea with the Principal and Deputy Principal at the end of the term.

#### PINNACLE BADGE

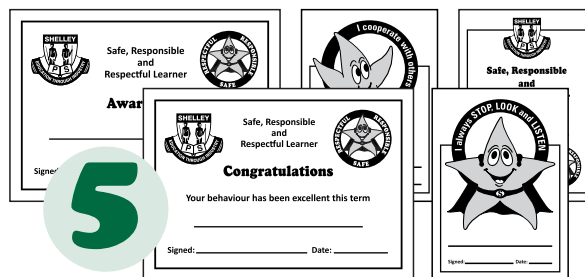
- Students bring their next 5 white awards to the Deputy Principal.
- White Awards are signed and dated by the Deputy Principal and returned to the student.
- Student's name published in the newsletter.
- Pinnacle badge presented at the K-6 Morning Assembly following publication in newsletter.
- Photo taken and attend the Super Star Morning Tea at the end of term.



#### MERIT AWARDS WHICH COUNT TOWARD THE PINNACLE BADGE

- Class Awards
- Green Awards
- Sports Person Awards (Friday PSSA Coach / Sports Awards)
- Citizenship Award
- Term Behaviour Award
- Term Attendance Award
- Creative and Performing Arts Group Awards
- Assistant Principal/Deputy Principal and Principal Awards
- Release From Face To Face Awards (RFF)
- Library Awards
- Support Teacher Learning Awards
- Scripture Awards

#### 5 Awards = 1 White Award



#### 5 White Awards = 1 Super Star Badge



The Pinnacle equates to 125 merit awards

**4 Super Star Badges + 5 White Awards = The Shelley Public School PINNACLE BADGE**

# All Settings Behaviour Flowchart

## Observe Problem Behaviour

Caution / Conference with Student and Record if a Level 1, 2, 3 or 4 Behaviour

Is the behaviour Teacher Managed or Executive Managed?

### Teacher Managed Level 1 and 2 Behaviour

#### LEVEL 1

- Out of bounds
- Interfering in other people's games
- Mock or play fighting
- Littering
- Swearing in conversation
- Running on hard surfaces
- Off task
- Calling out
- Low level behaviour

**Verbal Reprimand from Teacher**

#### LEVEL 2

- Offensive behaviour eg inappropriate comments, lying, spitting
- Unsafe behaviour eg throwing objects, tackling, shoving, pushing, running indoors and tripping
- Disruptive behaviour eg persistent calling out, preventing others from completing tasks, arguing with peers or not following instructions.
- Minor incident

**Timeout Buddy Class**

### Executive Managed Level 3 and 4 Behaviour

#### LEVEL 3

- Repeatedly disobeying a teacher eg refusal to follow instructions, attempt set tasks or arguing with the teacher
- Stealing
- Fighting
- Bullying
- Aggressive Behaviour eg standing over people, biting, kicking, hitting, pinching, punching, spitting at someone and put downs
- Offensive language
- Lying
- Major incident

#### LEVEL 4

- Premeditated assault on any person at school
- Use and/or possession of dangerous implements or weapons at school
- Serious incident
- Repeated inappropriate behaviour
- Vandalism at school
- Truancy

**Parents will be notified of all levels via Student Contact Cards.**

Parents will receive a warning letter after a student's 2nd detention informing parents & student that they are at risk of exclusion. In addition, a planning meeting will be arranged with parents for Levels 3 & 4 and an exclusion letter will be given.



### Steps Taken Level 3 and 4

**Detention recorded before lunch**  
will serve detention **that day**

**Detention recorded during lunch or after**  
will serve detention next day

#### Detention x 1

Executive records on EBS4 and sends note home

#### Detention x 2

**(in one week)**

Primary students with 2 detentions in 1 week do not attend PSSA that week

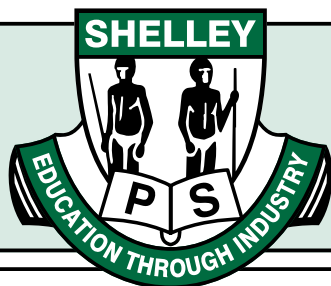
#### Detention x 3

**3 Way Interview**

Does not attend incursions, excursions or any extra-curricular activities for the rest of the term (final decision on an individual case basis)

**A discussion occurs at the executive meeting. A referral is made to the learning support team if necessary**





# Shelley Public School

## P & C Association

### Office Bearers and their Duties

The Executive Committee consists of the officers of the association and up to six other members and carries out the decisions of the association. Members of the Executive Committee shall not receive any remuneration or other material benefit by reason of their position in the association.

The officers shall consist of President, two Vice-Presidents, Treasurer and Secretary, and shall be elected at the annual general meeting.

#### The President

- Shall preside at all meetings
- Liaise with the Principal and the staff
- Be a spokesperson for the parents of the school, both within the school and in the general community
- Be an ex officio member of all subcommittees.

#### The Vice President

- Shall carry out all the duties of the President when they are absent from meetings
- Will assist the President when ever needed to ensure the smooth running of the P & C Association
- Is responsible for co-ordinating the Canteen and liaising between the Canteen Supervisor, the Canteen Committee and the P & C Association.

#### The Junior Vice President

- Shall carry out the duties of the President if both the President and the Vice President are absent.
- Will assist the President and Vice President as required
- Will be responsible in overseeing the Fundraising of the P & C Association.

#### The Secretary

- Shall carry out the official correspondence of the P & C Association
- Will maintain communication with the President regarding any action required between meetings
- Will take minutes of all association meetings – they may use a tape recorder if they would like to
- Will count the number of people attending each Association meeting.

#### The Treasurer

- Shall receive and deposit monies, maintain records, draw cheques and present accounts to each general meeting
- Present all records for auditing each year and shall hand over all records to the incoming Treasurer on relinquishing office.
- The requirements for handling money, keeping records, etc, in the School Manual on Financial Management shall be followed.

#### Executive Members

Executive members are required to help and contribute wherever they can and to help on the subcommittees of the Canteen and Uniform Shop.

To hold a position on any of the P & C Committees or to vote or nominate anyone for a position, you must be a financial member of the P & C.

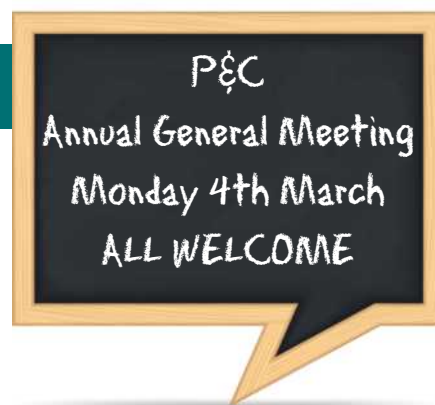
Gaining membership is easy. Simply pay \$2.00 to the Treasurer on the night of the AGM prior to it starting, or put your \$2.00 in an envelope marked with your name, address and phone number and place it in the P & C box at the canteen.



## P & C News

The Shelley Public School P&C Association is a not-for-profit organisation which is established to promote the interests of the school by bringing parents, citizens and teaching staff together to assist in providing equipment and funding to the school to help maximise our children's education.

Membership of the P&C is open to all parents, guardians and citizens of the school. Shelley's P&C meets on the first Monday of each month at 7pm in Room 2 and we are always keen to welcome new members.



### Our next meeting is Monday 4th February

Our AGM is on Monday 4th March, during which our Executive Committee will be elected for the year.

There are several ways which you are able to be involved in the P&C. This can include raising money to purchase equipment, providing a service such as helping with the covering of books, volunteering your time to help in the Uniform Shop or Canteen (both P&C owned and operated), supporting fundraisers such as purchasing raffle tickets, attending P&C meetings and becoming a financial member.

Becoming a financial member of the P&C is only \$2 per year and allows you voting rights in the meetings and copies of all general meeting minutes. If you wish you may also stand to be a member of the Executive Committee. All executive positions are currently advertised in the school newsletter. You do not have to be available at the school every day to be a member, in fact many of our members work, some full time, some part time, but being a part of the P&C is very rewarding as we primarily do what we do for our children.



If you are interested in becoming a member of Shelley P&C please complete the form below and bring it with you to the next meeting. If you are unable to attend the meeting but wish to become a member and receive copies of the minutes please submit this form and payment to the school canteen.

**Stephanie Walton** P&C President 2018

## WORKING TOGETHER TO MAKE A DIFFERENCE

### Shelley P&C Membership 2019

Yes I would like to become a financial member of the P&C. I have enclosed my \$2 membership fee.

Name: .....

School Community Member: ☐ Parent / Caregiver ☐ Citizen

Child/s Name and Class: .....

.....

.....

Contact Phone Number: ..... Email Address: .....

Hadrian Avenue, BLACKTOWN Telephone: 9622 8359 Facsimile: 9831 6726 Email: [pandc.shelley@hotmail.com](mailto:pandc.shelley@hotmail.com)



KILDARE ROAD medical centre®

## ALLERGY CLINIC NOW OPEN

**Do you suffer from a runny nose, runny or itchy eyes or excess mucous production?**

If so, you may be allergic to common airborne allergens such as:

- animal dander
- house dust mites
- mould spores
- pollens (grass, trees, weed)

To find out about diagnosis and treatment for these allergies, book an appointment with **Dr. Phil Humphris** or **Dr. Nabeel Makmahi** today!

### To make an appointment

book online at [kildaremedical.com.au](http://kildaremedical.com.au),  
download the free HotDoc App,  
or call Reception on 8822 3000

**OPEN EVERY DAY 8:00am – 8:00pm**



36 Kildare Road, Blacktown (next to Westpoint)

**BULK-BILLING PRACTICE | WALK-INS WELCOME**

To stay up to date with our services and health news,  
follow us on: Facebook & Twitter @kildareroadmc

Advertisements are inserted in good faith. Shelley Public School does not endorse or carry responsibility for claims



# evolution orthodontics

[www.evolutionorthodontics.com.au](http://www.evolutionorthodontics.com.au)

Telephone: Blacktown 02 9676 3400

Dubbo 02 6885 2110

[info@evolutionorthodontics.com.au](mailto:info@evolutionorthodontics.com.au)

# Give Girl Guides a Go at Prospect!

## Saturday 3 March 2–4.30pm

For girls 7-9 years old

**Activities, games, crafts, fun & making friends!**

**with Parent Information Session at 4pm**

Contact Nicole to register for this FREE event

0402 220 587 [nicole2004@live.com.au](mailto:nicole2004@live.com.au)

Prospect Guide Hall Myrtle Street (Behind St Johns)



GIRL GUIDES  
AUSTRALIA  
NSW & ACT

**MORE OPTIONS NOW AVAILABLE**

# FLIPOUT<sup>®</sup> Blacktown



# PARTIES



**For more information contact the store  
directly on 9679 8888 or email us at  
[blacktown@flipout.net.au](mailto:blacktown@flipout.net.au)**





# Lilly Pilly Kids

Before and After School Care & Vacation Care

Hi, my name is Stacey.

I run Lilly Pilly Kids in Prospect, providing care and education to school aged children within a warm and secure home environment.

Along with relevant qualifications, I have nearly 15 year's experience in education and care for children.

I provide:

- ☐ Before and After School & Vacation Care including transport to and from school.
- ☐ Healthy breakfast and afternoon tea
- ☐ A small group environment
- ☐ First Aid, Asthma, Anaphylaxis trained educator
- ☐ Interesting, fun and safe program with a variety of structured and unstructured activities.

*Mornings and limited afternoon spots are available*

*For enquiries please call:*

**0419 606 377**

Registered with Kids Early Learning Blacktown City Family Day Care 9839 6800

***Chase a ball with a stick this winter***

## **Join Hockey Blacktown's 2019 Winter Programme**

**Local training**

**Local games**

**For 7 to 10 year old boys and girls commencing Monday 30 April**

***After more information?***

**Lyn 0421 798 242**

**email@hockeyblacktown.org.au**

**<http://www.hockeyblacktown.org.au>**







# MITCHELL HIGH SCHOOL



## YEAR 6 INTO YEAR 7 (2020) **OPEN NIGHT**

Invitation to Year 6 students and their parent/carer(s)

Come and explore the 21st century learning opportunities offered at Mitchell High School

TUESDAY 5 MARCH 2019

6.30PM – 8.30PM

MITCHELL HIGH SCHOOL HALL

KEYWORTH DRIVE BLACKTOWN

- Meet and talk to our Executive Staff and teachers
- Tour our school grounds
- Explore our classrooms
- Discover our educational opportunities

EXCELLENCE IN EDUCATION SINCE 1964